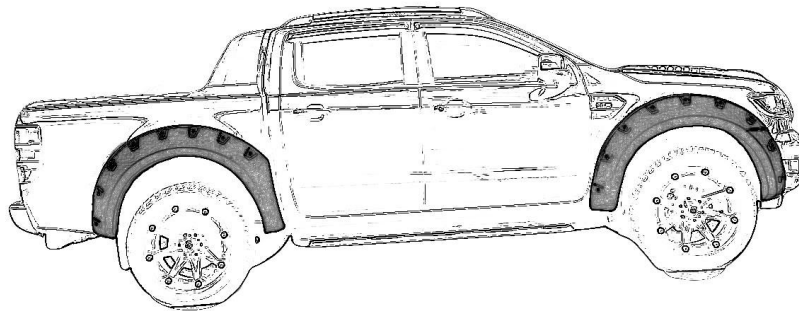


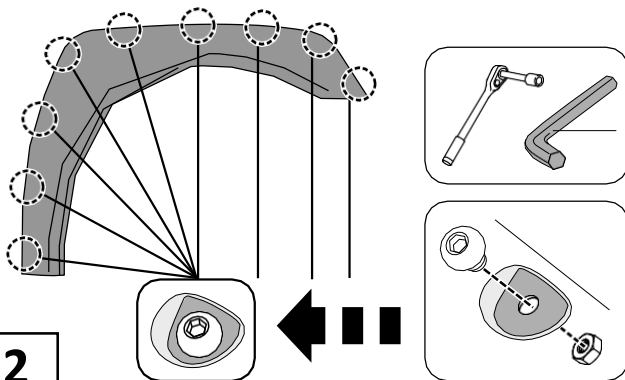
FENDER FLARES INSTALLATION INSTRUCTIONS

1



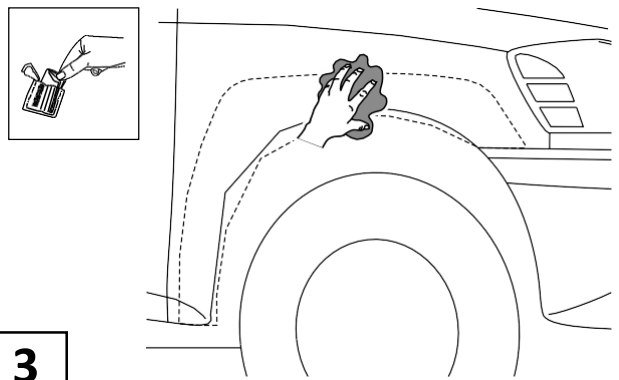
Ensure that both left and right hand Fender Flares suit the profile of the vehicle. Note the areas where the Fender Flares come in contact with the vehicle. NOTE: Before fitting Fender Flares remove any mouldings, strips or existing flares from the wheel arch. If there is a body side moulding, mark where the moulding is to be cut, alternatively the Fender Flares can be cut to go around the moulding. Be sure to allow enough room for the extrusion.

2



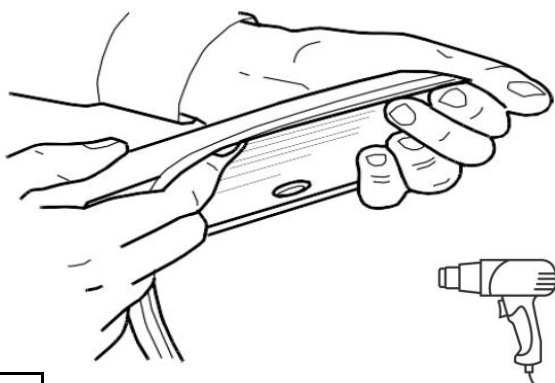
Attach bolts to each Fender Flare using an Allen key and a 1/2" wrench/socket. (wrench/socket and Allen key not supplied)

3



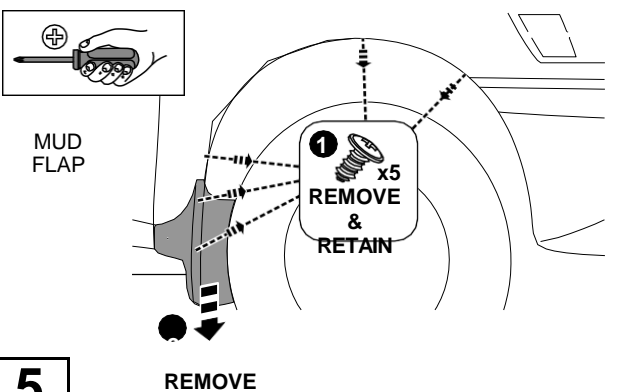
Wash the areas of contact on the vehicle and wipe dry both the vehicle and the Fender Flares with a clean cloth. Ensure inside of Fender Flares where extrusion is attached is clean, use alcohol wipe supplied to clean surface.

4

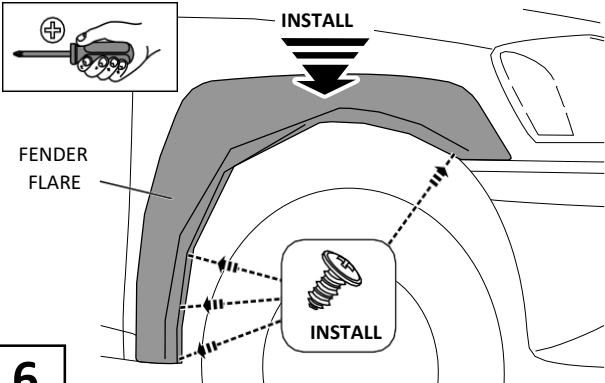
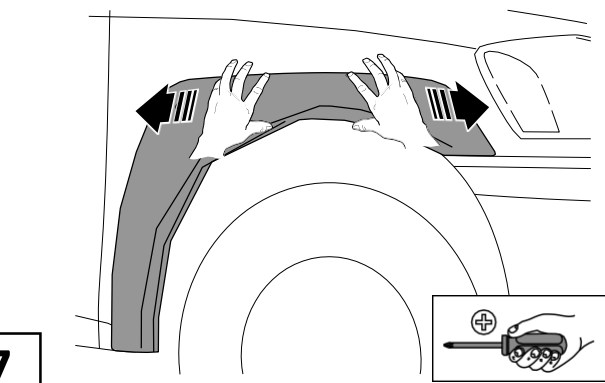
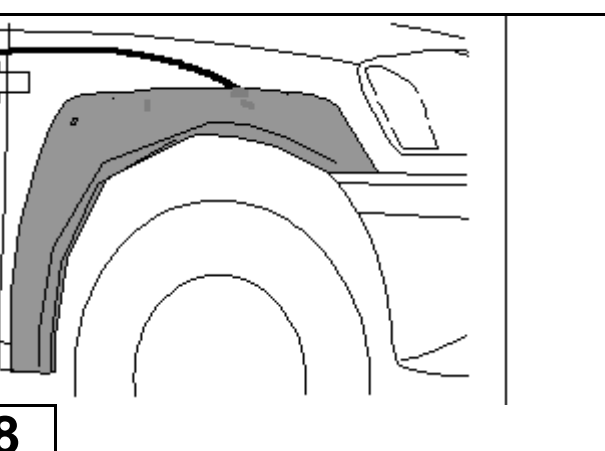
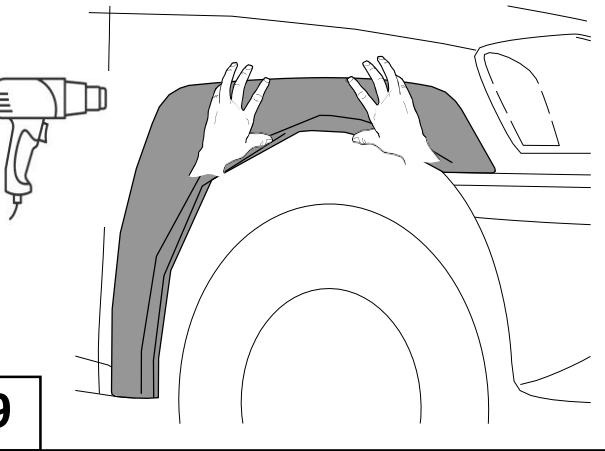


Clean the flares, and then apply the double sided tape to the top edge of the flare. Use heat gun to warm up the tape to make them stick stronger.

5



Remove and retain the existing OEM screws from the wheel arch. Remove the mud flaps from the vehicle as shown

| | |
|--|---|
|  <p>6</p> |  <p>7</p> |
| <p>Place flare on vehicle and attach the previously removed screws as shown. Do not fully tighten at this stage.</p> | <p>If necessary, make minor adjustments to the flare's position to achieve the best fit for your vehicle. Once satisfied, tighten all screws currently installed.</p> |
|  <p>8</p> |  <p>9</p> |
| <p>Peel off the double sided tape at last after adjusted position of the flares.</p> | <p>Push the flares to let the tape stick on the car. Use heat gun to warm up the tape to make them stick stronger.</p> |